

# CHSUN Valve

KNIFE GATE VALVE EXPERT

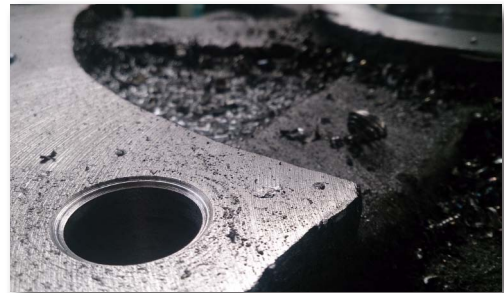


KNIFE GATE VALVE EXPERT



# Company

**CHISUN** is specialized in production of over 15 series different kinds of knife gate valves in more than 2800 specifications. We have obtained more than 20 national patents and owned the new national key product. We've also been involved in the national torch project. Our knife gate valves are widely used in different situations and applied to different systems, such as paper productions, foodstuff, metallurgy, electric power plant, petrochemical application, sewage treatment and so on. Our valves is strictly execute MSS-SP 81 standard on the pressure test. For now, our business has been well behaved in domestic and abroad. We have a lot of clients in Europe,USA, Australia, Indonesia, South Africa, Russia, etc. And we have now acquired ISO9001 certificate.



«KNIFE GATE VALVE EXPERT»

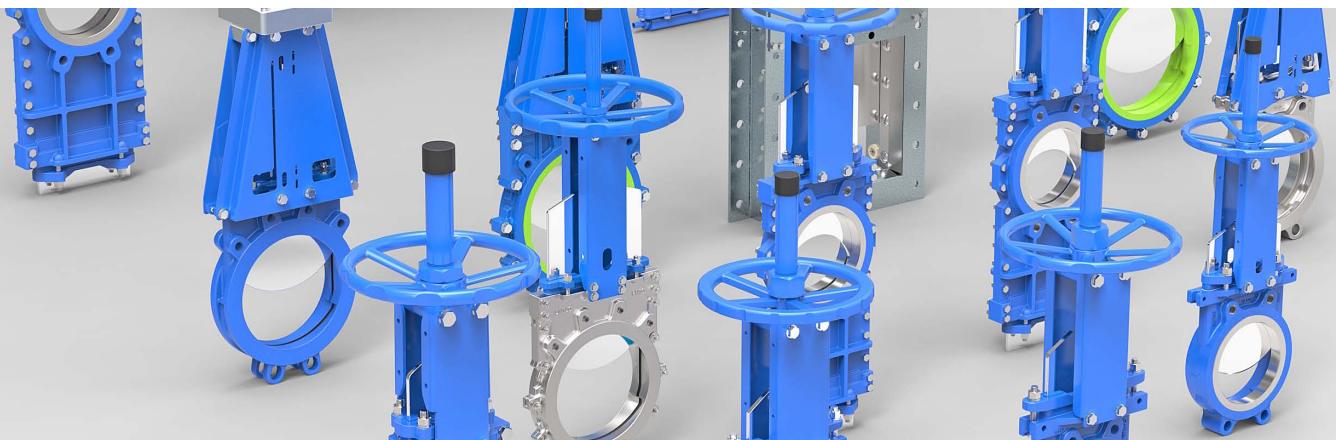
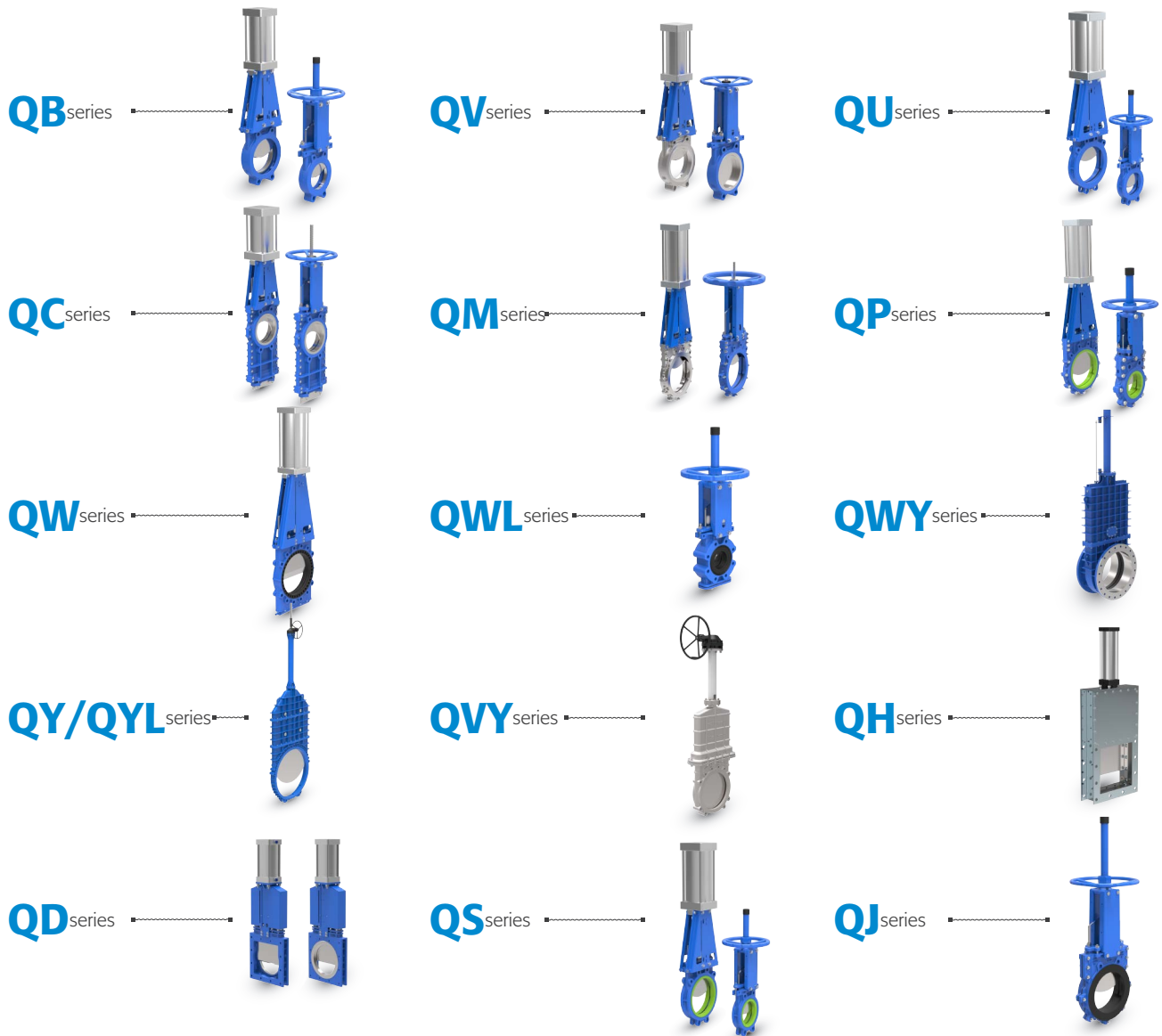
ООО «ТИ-СИСТЕМС» ИНЖИНИРИНГ И ПОСТАВКА ТЕХНОЛОГИЧЕСКОГО ОБОРУДОВАНИЯ

Интернет: [www.tisys.ru](http://www.tisys.ru) [www.tisys.kz](http://www.tisys.kz) [www.tisys.by](http://www.tisys.by) [www.tesec.ru](http://www.tesec.ru) [www.ти-системс.рф](http://www.ти-системс.рф)

Телефоны: +7 (495) 7774788, 7489626, (925) 5007155, 54, 65 Эл. почта: [info@tisys.ru](mailto:info@tisys.ru) [info@tisys.kz](mailto:info@tisys.kz) [info@tisys.by](mailto:info@tisys.by)

## Products

More than 50 countries cooperation and projects



## QB



Unidirectional Sealing  
Light Seat replaceable

### QB series Unidirectional Seal Knife Gate Valve/Light Seat Replaceable

**Model:** QBZ73X

<b>Working Pressure:</b>	DN50-DN100	16bar	DN600-DN650	5bar
	DN125-DN200	14bar	DN700-DN750	4bar
	DN250-DN300	12Bar	DN800-DN900	3bar
	DN350-DN400	10bar	DN1000	2bar
	DN450-DN550	8bar		

**Type:** Wafer,Lug,Flange

**Design Standard:** MSS SP-81

**Flange Standard:** PN10,PN16,150LB ,JIS 10K,TABLE E/D

**Face to Face:** MSS SP-81

**Testing Standard:** API-598

**Transmission:** manual, electric, pneumatic, hydraulic, sprocket, electro-hydraulic, gear

**Main material:** F55,F53,2205,SS310,CF3M,CF3,CF8M,CF8,WCB,GGG40

**Disc material:** F55,F53,2205,SS310,SS316L,SS304

**Sealing material:** NBR,NR,EPDM,FKM,Metal to Metal

**Packing:** PTFE,high water based,rubber packing,graphite

**Applicable medium:** Applicable for general purpose.

## QV



Unidirectional Sealing  
Heavy Seat replaceable

### QV series Unidirectional Seal Knife Gate Valve/Heavy Seat Replaceable

**Model:** QVZ73X

<b>Working Pressure:</b>	DDN50-DN100	16bar	DN600-DN650	5bar
	DN125-DN200	14bar	DN700-DN750	4bar
	DN250-DN300	12Bar	DN800-DN900	3bar
	DN350-DN400	10bar	DN1000	2bar
	DN450-DN550	8bar		

**Type:** Wafer,Lug

**Design Standard:** MSS SP-81

**Flange Standard:** DIN PN10,PN16,150LB ,JIS 10K,TABLE E/D

**Face to Face:** MSS SP-81

**Testing Standard:** API-598

**Operation:** handwheel, electric, pneumatic, hydraulic, sprocket, electro-hydraulic, gear

**Main material:** WCB,GGG40,CF8,CF8M,F55,F53,2205,SS310,CF3M,CF3

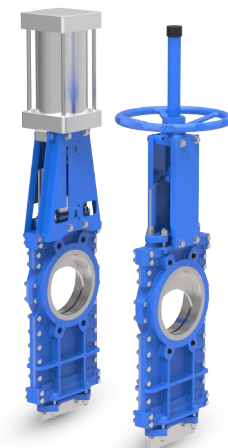
**Disc material:** F55,F53,2205,SS310,SS316L,SS304

**Sealing material:** NBR,NR,EPDM,FKM,Metal to Metal

**Packing:** PTFE,high water based,rubber packing,graphite

**Applicable medium:** Applicable for sugar, paper, sewage, tailings, slagging, and other general purpose.

## QC



Bi-directional Sealing  
Disc Through Type

### QC series Bi-directional Seal Knife Gate Valve/Disc Through type

**Model:** QCZ73X

<b>Working Pressure:</b>	DN50-DN100	16bar		
	DN125-DN200	14bar		
	DN250-DN300	12Bar		
	DN350-DN400	10bar		

**Type:** Wafer

**Design Standard:** MSS SP-81

**Flange Standard:** DIN PN10,PN16,150LB ,JIS 10K,TABLE E/D

**Face to Face:** MSS SP-81

**Testing Standard:** API-598

**Operation:** handwheel, electric, pneumatic, hydraulic, sprocket, electro-hydraulic, gear

**Main material:** WCB,CF8M,CF8

**Disc material:** F55,F53,2205,SS310,SS316L,SS316,SS304

**Sealing material:** NBR,NR,EPDM,FKM,Metal to Metal

**Packing:** PTFE,high water based,rubber packing,graphite

**Applicable medium:** Applicable for paper, asphalt, tailings, slagging, cement, slime, Dust,Solid Particles, deslagging and so on.

## QW



Bi-directional Sealing  
Self Sealing

### QW series Bi-directional Self-sealing Knife Gate Valve

<b>Model:</b>	QWZ73X		
<b>Working Pressure:</b>	DN50-DN100 16bar	DN450-DN500 5Bar	
	DN125-DN200 10bar	DN600-DN700 3bar	
	DN250-DN400 7bar	DN800 2bar	
<b>Type:</b>	Wafer		
<b>Design Standard:</b>	MSS SP-81		
<b>Flange Standard:</b>	DIN PN10,PN16,150LB ,JIS 10K,TABLE E/D		
<b>Face to Face:</b>	MSS SP-81		
<b>Testing Standard:</b>	API-598		
<b>Operation:</b>	handwheel, electric, pneumatic, hydraulic, sprocket, electro-hydraulic, gear		
<b>Main material:</b>	GGG40,WCB,CF8,CF8M		
<b>Disc material:</b>	F55,F53,2205,SS310,SS316L,SS316,SS304		
<b>Sealing material:</b>	NR		
<b>Packing:</b>	PTFE,high water based,rubber packing,graphite		
<b>Applicable medium:</b>	Applicable for mud, pulp, tailings, cyclones and so on.		

## QWL

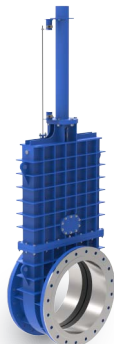


Bi-directional Sealing  
Self Sealing Medium Pressure

### QWL series Bi-directional Self-sealing Knife Gate Valve/Medium Pressure

<b>Model:</b>	QWLZ43X		
<b>Working Pressure:</b>	DN50-DN800 20bar		
	DN900-DN1000 10bar		
<b>Type:</b>	Lug,Flange		
<b>Design Standard:</b>	MSS SP-81		
<b>Flange Standard:</b>	DIN PN10,PN16,150LB ,JIS 10K,TABLE E/D		
<b>Face to Face:</b>	MSS SP-81		
<b>Testing Standard:</b>	API-598		
<b>Operation:</b>	handwheel, electric, pneumatic, hydraulic, sprocket, electro-hydraulic, gear		
<b>Main material:</b>	GGG40		
<b>Disc material:</b>	F55,F53,2205,SS310,SS316L,SS316,SS304		
<b>Sealing material:</b>	NR		
<b>Packing:</b>	PTFE,high water based,rubber packing,graphite		
<b>Applicable medium:</b>	Applicable for Mud, pulp, tailings, cyclones and so on.		

## QWY



Bi-directional Sealing  
Fully Enclosed Medium  
Pressure

### QWY series Bi-directional Seal Knife Gate Valve/Fully Enclosed Medium Pressure

<b>Model:</b>	QWYZ43X		
<b>Working Pressure:</b>	DN300-DN500 20bar		
	DN550-DN800 16bar		
	DN850-DN1000 10bar		
	DN1100-DN2000 8bar		
<b>Type:</b>	Flange		
<b>Design Standard:</b>	MSS SP-81		
<b>Flange Standard:</b>	DIN PN10,PN16,150LB ,JIS 10K,TABLE E/D		
<b>Face to Face:</b>	MSS SP-81		
<b>Testing Standard:</b>	API-598		
<b>Operation:</b>	handwheel, electric, pneumatic, hydraulic, sprocket, electro-hydraulic, gear		
<b>Main material:</b>	F55,F53,2205,SS310,CF3M,CF3,CF8M,CF8,WCB		
<b>Disc material:</b>	F55,F53,2205,SS310,SS316L,SS316,SS304		
<b>Sealing material:</b>	NBR,NR,EPDM,		
<b>Packing:</b>	PTFE,high water based,rubber packing,graphite		
<b>Applicable medium:</b>	Applicable for sudge boat, cutter suction boat, mud and so on.		

## QJ



Bi-directional  
Rubber Lining

### QJ series 2PC Body Bi-directional Fully Rubber Lining Knife Gate Valve

<b>Model:</b>	QJZ73X		
<b>Working Pressure:</b>	DN50-DN200 16bar		
	DN250-DN600 10bar		
	DN650-DN700 8bar		
	DN750-DN1000 6bar		
<b>Type:</b>	Wafer		
<b>Design Standard:</b>	MSS SP-81		
<b>Flange Standard:</b>	DIN PN10,PN16,150LB ,JIS 10K,TABLE E/D		
<b>Face to Face:</b>	MSS SP-81		
<b>Testing Standard:</b>	API-598		
<b>Operation:</b>	handwheel, electric, pneumatic, hydraulic, sprocket, electro-hydraulic, gear		
<b>Main material:</b>	GGG40		
<b>Disc material:</b>	F55,F53,2205,SS310,SS316L,SS316,SS304		
<b>Sealing material:</b>	NBR,NR,EPDM,FKM		
<b>Packing:</b>	PTFE,high water based,rubber packing,graphite		
<b>Applicable medium:</b>	Applicable for high pressure, sewage treatment, paper, Slurry, Mining, sedimentation tank, mud, tailings and so on.		

«KNIFE GATE VALVE EXPERT»

ООО «ТИ-СИСТЕМС» ИНЖИНИРИНГ И ПОСТАВКА ТЕХНОЛОГИЧЕСКОГО ОБОРУДОВАНИЯ

Интернет: [www.tisys.ru](http://www.tisys.ru) [www.tisys.kz](http://www.tisys.kz) [www.tisys.by](http://www.tisys.by) [www.tesec.ru](http://www.tesec.ru) [www.ти-системс.рф](http://www.ти-системс.рф)

Телефоны: +7 (495) 7774788, 7489626, (925) 5007155, 54, 65 Эл. почта: [info@tisys.ru](mailto:info@tisys.ru) [info@tisys.kz](mailto:info@tisys.kz) [info@tisys.by](mailto:info@tisys.by)

## QU



Bi-directional Sealing Grooveless

**QU** series  
1PC Body Bi-directional seal Knife Gate Valve Grooveless

**Model:** QUZ73X  
**Working Pressure:**

DN50-DN100	16bar	DN600-DN650	5bar
DN125-DN200	14bar	DN700-DN750	4bar
DN250-DN300	12Bar	DN800-DN900	3bar
DN350-DN400	10bar	DN1000	2bar
DN450-DN550	8bar		

**Type:** Wafer  
**Design Standard:** MSS SP-81  
**Flange Standard:** DIN PN10,PN16,150LB ,JIS 10K,TABLE E/D  
**Face to Face:** MSS SP-81  
**Testing Standard:** API-598  
**Operation:** handwheel, electric, pneumatic, hydraulic, sprocket, electro-hydraulic, gear  
**Main material:** GGG40  
**Disc material:** SS316L,SS304  
**Sealing material:** NBR,NR,EPDM,FKM  
**Packing:** PTFE,high water based,rubber packing,graphite  
**Applicable medium:** Applicable for sewage treatment, paper, sedimentation tanks, mud and so on.

## QS



Bi-directional Sealing Grooveless Wear-resistant

**QS** series  
1PC Body Bi-directional seal Knife Gate Valve Grooveless Wear-Resistant

**Model:** QSZ73X  
**Working Pressure:**

DN50-DN100	10bar
DN125-DN200	8bar
DN250	5bar

**Type:** Wafer  
**Design Standard:** MSS SP-81  
**Flange Standard:** DIN PN10,PN16,150LB ,JIS 10K,TABLE E/D  
**Face to Face:** MSS SP-81  
**Testing Standard:** API-598  
**Operation:** handwheel, electric, pneumatic, hydraulic, sprocket, electro-hydraulic, gear  
**Main material:** GGG40  
**Disc material:** F55,F53,2205,SS310,SS316L,SS316,SS304  
**Sealing material:** NBR,NR,EPDM,FKM  
**Seat Cover:** Polyurethane  
**Packing:** PTFE,high water based,rubber packing,graphite  
**Applicable medium:** Applicable for sewage treatment, paper, sedimentation tanks, mud and so on.

## QM



Bi-directional Sealing 2PC Body Grooveless

**QM** series  
2PC Body Bi-directional seal Knife Gate Valve Grooveless

**Model:** QMZ73X  
**Working Pressure:**

DN50-DN200	16bar
DN250-DN600	10bar
DN650-DN700	8bar
DN750-DN1000	6bar

**Type:** Wafer  
**Design Standard:** MSS SP-81  
**Flange Standard:** DIN PN10,PN16,150LB ,JIS 10K,TABLE E/D  
**Face to Face:** MSS SP-81  
**Testing Standard:** API-598  
**Operation:** handwheel, electric, pneumatic, hydraulic, sprocket, electro-hydraulic, gear  
**Main material:** F55,F53,2205,SS310,CF3M,CF3,CF8M,CF8,WCB,GGG40  
**Disc material:** F55,F53,2205,SS310,SS316L,SS316,SS304  
**Sealing material:** NBR,NR,EPDM,FKM  
**Packing:** PTFE,high water based,rubber packing,graphite  
**Applicable medium:** Applicable for high pressure, pulp, sewage treatment, paper, sedimentation tank, mud, tailings and so on.

## QP



Bi-directional Sealing Polyurethane Liner

**QP** series  
2PC Body Bi-directional seal Polyurethane lined Knife Gate Valve

**Model:** QPZ73PU  
**Working Pressure:**

DN50-DN200	16bar
DN250-DN600	10bar
DN650-DN700	8bar

**Type:** Wafer  
**Design Standard:** MSS SP-81  
**Flange Standard:** DIN PN10,PN16,150LB ,JIS 10K,TABLE E/D  
**Face to Face:** MSS SP-81  
**Testing Standard:** API-598  
**Operation:** handwheel, electric, pneumatic, hydraulic, sprocket, electro-hydraulic, gear  
**Main material:** CF8M,CF8,WCB,GGG40  
**Disc material:** F55,F53,2205,SS310,SS316L,SS316,SS304  
**Sealing material:** Polyurethane  
**Packing:** PTFE,high water based,rubber packing  
**Applicable medium:** Applicable for mineral processing, sewage, tailings, slag, seawater, and other acid and alkali wear, media conditions, such as cyclone.

«KNIFE GATE VALVE EXPERT»

3

ООО «ТИ-СИСТЕМС» ИНЖИНИРИНГ И ПОСТАВКА ТЕХНОЛОГИЧЕСКОГО ОБОРУДОВАНИЯ

Интернет: [www.tisys.ru](http://www.tisys.ru) [www.tisys.kz](http://www.tisys.kz) [www.tisys.by](http://www.tisys.by) [www.tesec.ru](http://www.tesec.ru) [www.ти-системс.рф](http://www.ти-системс.рф)

Телефоны: +7 (495) 7774788, 7489626, (925) 5007155, 54, 65 Эл. почта: [info@tisys.ru](mailto:info@tisys.ru) [info@tisys.kz](mailto:info@tisys.kz) [info@tisys.by](mailto:info@tisys.by)

## QY



Unidirectional Sealing

## QY series

Unidirectional seal Knife Gate Valve

**Model:** QYZ73X  
**Working Pressure:** DN50-DN100 16bar DN600-DN650 5bar  
 DN125-DN200 14bar DN700-DN750 4bar  
 DN250-DN300 12Bar DN800-DN900 3bar  
 DN350-DN400 10bar DN1000-DN3000 2bar  
 DN450-DN550 8bar  
**Type:** Wafer,Lug,Flange  
 MSS SP-81  
**Design Standard:** DIN PN10,PN16,150LB ,JIS 10K,TABLE E/D  
**Flange Standard:** MSS SP-81  
**Face to Face:** API-598  
**Testing Standard:** handwheel, electric, pneumatic, hydraulic, sprocket, electro-hydraulic, gear  
**Operation:** F55,F53,2205,SS310,CF3M,CF3,CF8M,CF8,WCB,GGG40  
**Main material:** F55,F53,2205,SS310,SS316L,SS316,SS304  
**Disc material:** NBR,NR,EPDM,FKM,Metal to Metal  
**Sealing material:** PTFE,high water based,rubber packing,graphite  
**Packing:** Applicable for steam, sewage, high pressure pipes,gas,air and so on.  
**Applicable medium:** Bi-directional seal available

## QVY



Unidirectional Sealing

## QVY series

Unidirectional seal Knife Gate Valve

**Model:** QVYZ73X  
**Working Pressure:** DN80-DN2000 25bar  
 DN2200-DN3000 16bar  
**Type:** Wafer,Lug,Flange  
**Design Standard:** MSS SP-81  
**Flange Standard:** DIN PN10,PN16,150LB ,JIS 10K,TABLE E/D  
**Face to Face:** MSS SP-81  
**Testing Standard:** API-598  
**Operation:** handwheel, electric, pneumatic, hydraulic, sprocket, electro-hydraulic, gear  
**Main material:** F55,F53,2205,SS310,CF3M,CF3,CF8M,CF8,WCB,GGG40  
**Disc material:** F55,F53,2205,SS310,SS316L,SS316,SS304  
**Sealing material:** NBR,NR,EPDM,FKM,Metal to Metal  
**Packing:** PTFE,high water based,rubber packing,graphite  
**Applicable medium:** Applicable for steam, sewage, high pressure pipes and so on.

## QH



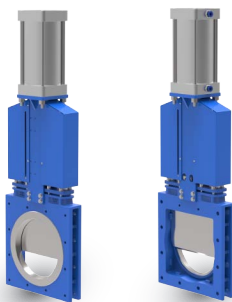
Unidirectional Sealing

## QH series

Unidirectional seal Knife Gate Valve

**Model:** QXZ43X  
**Working Pressure:** DN150-DN400 6-10bar  
 DN450-DN550 4-7bar  
 DN600-DN800 3-5bar  
 DN850-DN900 1-2bar  
**Type:** Flange  
**Design Standard:** MSS SP-81  
**Flange Standard:** DIN PN10,PN16,150LB ,JIS 10K,TABLE E/D  
**Face to Face:** MSS SP-81  
**Testing Standard:** API-598  
**Operation:** handwheel, electric, pneumatic, hydraulic, sprocket, electro-hydraulic, gear  
**Main material:** Q235,Stainless Steel  
**Disc material:** F55,F53,2205,SS310,SS316L,SS316,SS304  
**Sealing material:** NBR,NR,EPDM,FKM,Metal to Metal  
**Packing:** PTFE,high water based,rubber packing,graphite  
**Applicable medium:** Dust,Solid Particles,Coal, oil, chemical and so on.

## QD



Unidirectional Sealing

## QD series

Unidirectional seal Knife Gate Valve

**Model:** QDZ43X  
**Working Pressure:** DN150-DN200 10bar  
 DN250-DN400 7bar  
 DN450-DN550 5bar  
 DN600-DN700 3bar  
**Type:** Flange  
**Design Standard:** MSS SP-81  
**Flange Standard:** DIN PN10,PN16,150LB ,JIS 10K,TABLE E/D  
**Face to Face:** MSS SP-81  
**Testing Standard:** API-598  
**Operation:** handwheel, electric, pneumatic, hydraulic, sprocket, electro-hydraulic, gear  
**Main material:** Q235,Stainless Steel  
**Disc material:** F55,F53,2205,SS310,SS316L,SS316,SS304  
**Sealing material:** NBR,NR,EPDM,FKM,Metal to Metal  
**Packing:** PTFE,high water based,rubber packing,graphite  
**Applicable medium:** Dust,Solid Particles,Coal, oil, chemical and so on.Slag, cinder,dislagging recommend.

«KNIFE GATE VALVE EXPERT»

4

ООО «ТИ-СИСТЕМС» ИНЖИНИРИНГ И ПОСТАВКА ТЕХНОЛОГИЧЕСКОГО ОБОРУДОВАНИЯ

Интернет: [www.tisys.ru](http://www.tisys.ru) [www.tisys.kz](http://www.tisys.kz) [www.tisys.by](http://www.tisys.by) [www.tesec.ru](http://www.tesec.ru) [www.ти-системс.рф](http://www.ти-системс.рф)

Телефоны: +7 (495) 7774788, 7489626, (925) 5007155, 54, 65 Эл. почта: [info@tisys.ru](mailto:info@tisys.ru) [info@tisys.kz](mailto:info@tisys.kz) [info@tisys.by](mailto:info@tisys.by)